

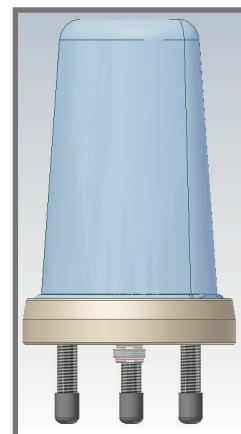
Type n° T-BP600

LOW PROFILE ANTENNA UHF / GPS / WIRELESS LAN

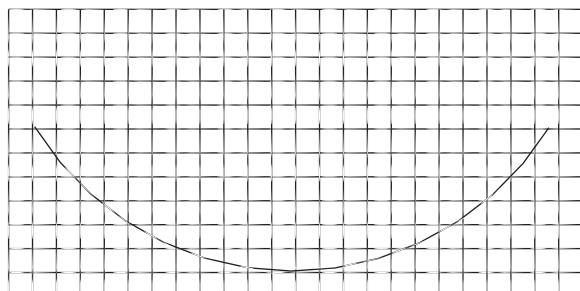
SPECIFICATIONS

Material:

Base:	Aluminium alloy EN AW-6082
Radome:	Polycarbonate
Net weight (g):	1000
Dimensions (mm):	106*160
Temperature (°C):	-40° - +80°
Mounting:	According to FEDERTRASPORTI 00104/5

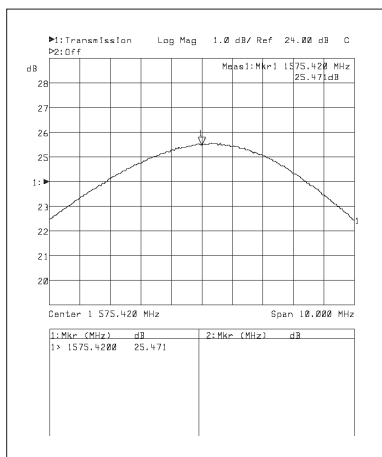


V.S.W.R. CURVE



TECHNICAL DATA 400÷470 MHz:

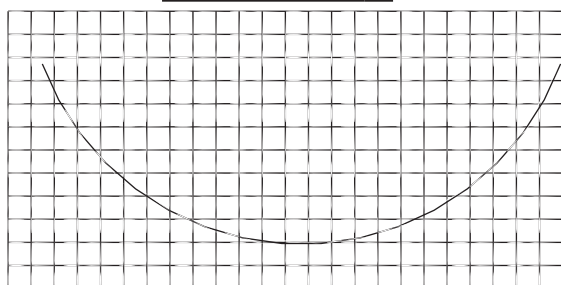
Frequency range:	400 ÷ 470 MHz
Impedance (Ohms):	50
Max power (W):	200
V.S.W.R.:	less than 1.5
Polarization:	Vertical
Emission:	Omnidirectional
Gain:	2.14 dBi over 1/4 l
Connector:	N Female



TECHNICAL DATA GPS:

Antenna type:	Active Planar Patch Antenna
Center frequency:	1575,42 MHz
Bandwidth:	± 1,023 MHz
V.S.W.R.:	less than 2.0
Impedance (Ohms):	50
Polarization:	RHCP
Current absorption:	20 ± 2 mA
Gain:	25 dB
Noise figure:	1.8 ÷ 2.2 dB
Supply voltage:	3 ÷ 5 V
Temperature (°C):	-30° - + 80°
Cable:	RG 174 mm.300±10 with FAKRA; capacity: 100pF/m

WIRELESS LAN CURVE



TECHNICAL DATA WIRELESS LAN:

Frequency range:	2400÷2485 MHz
V.S.W.R.:	less than 1.7
Polarization:	Vertical
Max power (W):	10
Impedance (Ohms):	50
Gain:	2.14 dBi over 1/4 l
Cable:	RG 174 mm.220±10 with SMA/M; capacity: 100pF/m